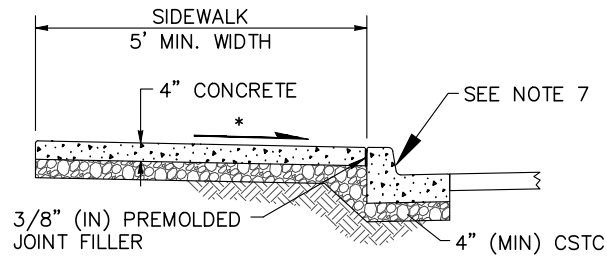
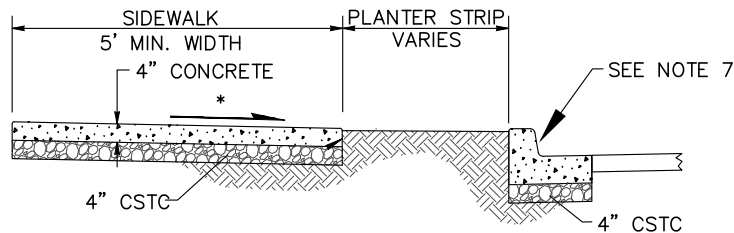


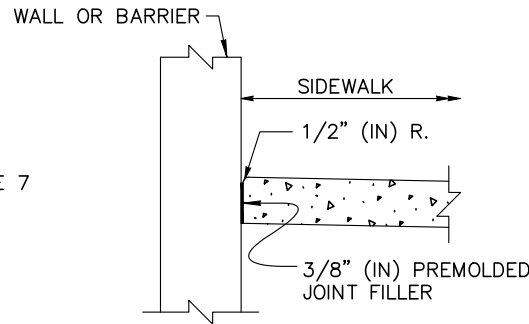
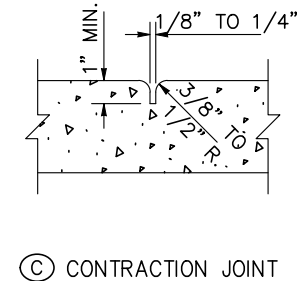
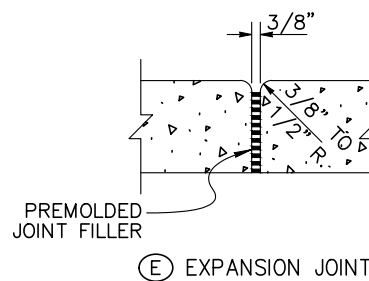
ISOMETRIC VIEW



SIDEWALK ADJACENT TO CURB



SIDEWALK ADJACENT TO PLANTER STRIP



SIDEWALK ADJACENT TO WALL DETAIL



LEGEND:

- * 1.5% OR FLATTER RECOMMENDED FOR DESIGN/FORMWORK (2% MAX)

NOTES:

1. EXPANSION JOINTS SHALL BE 3/8" PREMOLDED JOINT FILLER EXTENDING THROUGH THE FULL CONCRETE CROSS SECTIONS. IN ADDITION TO THE EXPANSION JOINT LOCATIONS SHOWN, EXPANSION JOINTS SHALL ALSO BE PLACED BETWEEN EXISTING AND NEW SIDEWALK INSTALLATIONS, CURB RAMPS, UTILITY POLES, SIGN POSTS, METER BOXES, VAULTS, ETC.
2. CONCRETE SHALL BE CLASS 3000, AIR ENTRAINED.
3. ALL EXTERNAL SIDEWALK EDGES TO BE TROWELED WITH 1/2" RADIUS EDGER.
4. BROOMED FINISH ON SIDEWALKS SHALL BE APPLIED PERPENDICULAR TO THE PEDESTRIAN DIRECTION OF TRAVEL.
5. 4" CSTC IS REQUIRED UNDER ALL CONCRETE.
6. 95% COMPACTION FOR SUBGRADE AND CSTC REQUIRED UNDER ALL CONCRETE SIDEWALKS.
7. CEMENT CONCRETE TRAFFIC CURB AND GUTTER.

NO SCALE

	APPROVAL  PUBLIC WORKS DIRECTOR
	DATE 01/21/2022
CEMENT CONCRETE SIDEWALKS	
DRAWING NO. ST-18	
REV:	