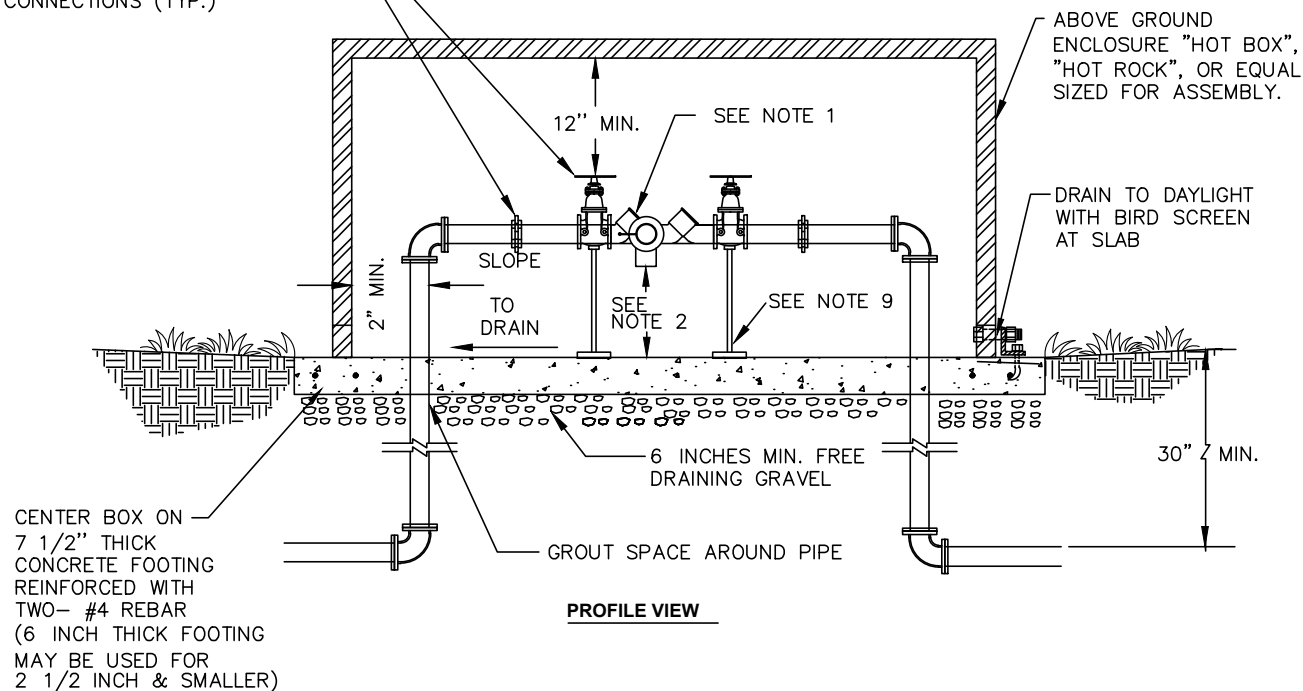
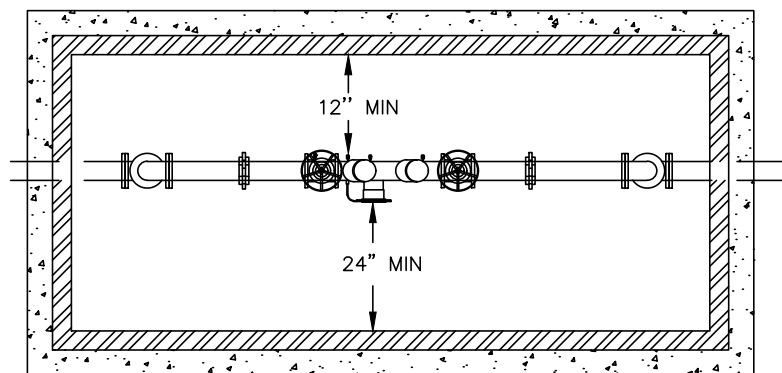


FOR 2 1/2 INCH &
SMALLER USE
APPROVED VALVE
AND UNION
CONNECTIONS (TYP.)



PROFILE VIEW



PLAN VIEW

NOTES

1. MUST BE ON THE LATEST DEPT. OF HEALTH APPROVED LIST OF BACKFLOW PREVENTION ASSEMBLIES.
2. MUST BE INSTALLED ABOVE FINISHED GRADE, MIN. 12 INCHES TO BOTTOM OF RELIEF PORT.
3. WHEN INSTALLED INSIDE A BUILDING, A FLOOR DRAIN SIZED TO ACCEPT MAXIMUM DISCHARGE FROM THE RELIEF ASSEMBLY IS REQUIRED.
4. FREEZE PROTECTION MUST BE PROVIDED.
5. RISERS AND ALL PIPE IN BOX TO BE BRASS, COPPER, OR PVC.
6. DO NOT INSTALL IN AREA SUBJECT TO FLOODING, ASSEMBLIES MUST BE INSTALLED ABOVE GROUND.
7. A TOWN CROSS CONNECTION SPECIALIST SHALL INSPECT INSTALLATION OF DEVICE AND RECEIVE TEST REPORTS PRIOR TO ESTABLISHMENT OF WATER SERVICE OR APPROVAL. TEST REPORTS MUST BE SIGNED BY A CERTIFIED BACKFLOW ASSEMBLY TESTER AND IMMEDIATELY SENT TO THE TOWN.
8. SOME CLEARANCES (I.E. SIDE AND TOP) MAY NOT BE REQUIRED FOR DEVICES WITH A FULLY REMOVABLE ENCLOSURE.
9. SUPPORTS MUST BE INSTALLED FOR SIZES LARGER THAN 2 1/2 INCHES.

NO SCALE



APPROVAL

Wayne R. Hays

PUBLIC WORKS DIRECTOR

**REDUCED PRESSURE
BACKFLOW ASSEMBLY
(RPBA) INSTALLATION**

DATE
01/21/2022

DRAWING NO.
W-15B

REV: