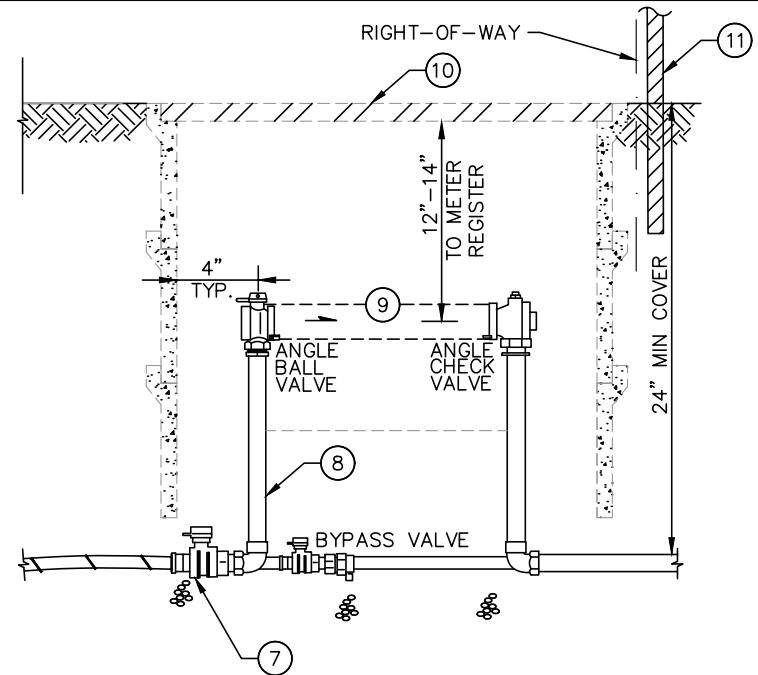
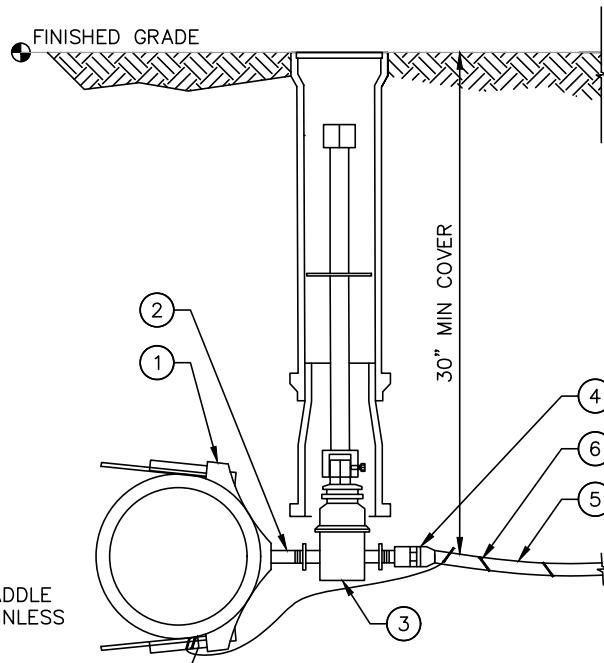



NOTES:

1. ROMAC, 306 DOUBLE BOLT SERVICE SADDLE WITH I.P. THREAD OR FORD FS313 STAINLESS STEEL SERVICE SADDLE
2. 2" BRASS NIPPLE.
3. HEAVY DUTY 2" GATE VALVE WITH RESILIENT SEAT AND 2" OPERATING NUT. GATE VALVES SHALL BE CLOW F-6103. FOR 1 1/2" SERVICE INSTALL 2"x1 1/2" BRASS BUSHING IN OUTLET THREADS.
4. BRASS BUSHING, NO LEAD.
5. WATER SERVICE SHALL BE REHAU PEX PIPE OR HDPE SDR11. PIPE SHALL BE SLEEVED WITH SCH. 80 PVC 3" DIA., UNDER SIDEWALKS.
6. 14 GAUGE COPPER, CONTINUOUS, SOLID CORE, HDPE COATED, RATED FOR DIRECT BURY. CONNECTION AT THE METER SETTER SHALL BE MADE WITH AN ALL STAINLESS STEEL HOSE CLAMP. CONNECTION AT THE MAIN LINE WIRE SHALL BE MADE WITH A SPLIT-BOLT CONNECTOR. STRIP COATING PRIOR TO CONNECTION.
7. CURB STOP SHALL BE FORD BII-666-NL FOR 1 1/2" SERVICE AND FORD BII-777-NL FOR 2" SERVICE.
8. METER SETTERS SHALL BE "FORD" 70 SERIES COPPER SETTER VBH76-18B-66NL FOR 1 1/2" AND VBH77-18B-11-77-NL FOR 2" SERVICE.
9. METER TO BE INSTALLED BY TOWN AT THE DEVELOPERS EXPENSE.
10. OLDCASTLE METER BOX, CARSON BCF RECTANGLE HEAVYWALL BODY HW1730-18 WITH 1730BCF FLSH COVER DI MAX VIEW READ DOOR.
11. INSTALL 2"x4"x6', MARKER POST, BURY 3', PAINT WHITE WITH "WATER" STENCILED IN BLUE PAINT, IF SERVICE IS NOT IMMEDIATELY CONNECTED.
12. IF REQUIRED FOR PREMISES ISOLATION, AN APPROVED, BACKFLOW ASSEMBLY SHALL BE INSTALLED IMMEDIATELY BEHIND THE WATER METER.
13. ALL SERVICE PIPE INSTALLED BY OPEN CUT CONSTRUCTION SHALL BE BEDDED IN CLEAN SAND, 4" OVER AND UNDER. NATIVE MATERIAL WILL NOT BE ACCEPTED.



14. METER BOX SHALL BE PLACED IN AN ACCESSIBLE LOCATION WITHOUT FENCING, VEGETATION, SIGNS OR OTHER OBSTRUCTIONS.

NO SCALE

	APPROVAL  PUBLIC WORKS DIRECTOR	
	1 1/2" AND 2" WATER SERVICE	DATE 01/21/2022 DRAWING NO. W-10 REV: