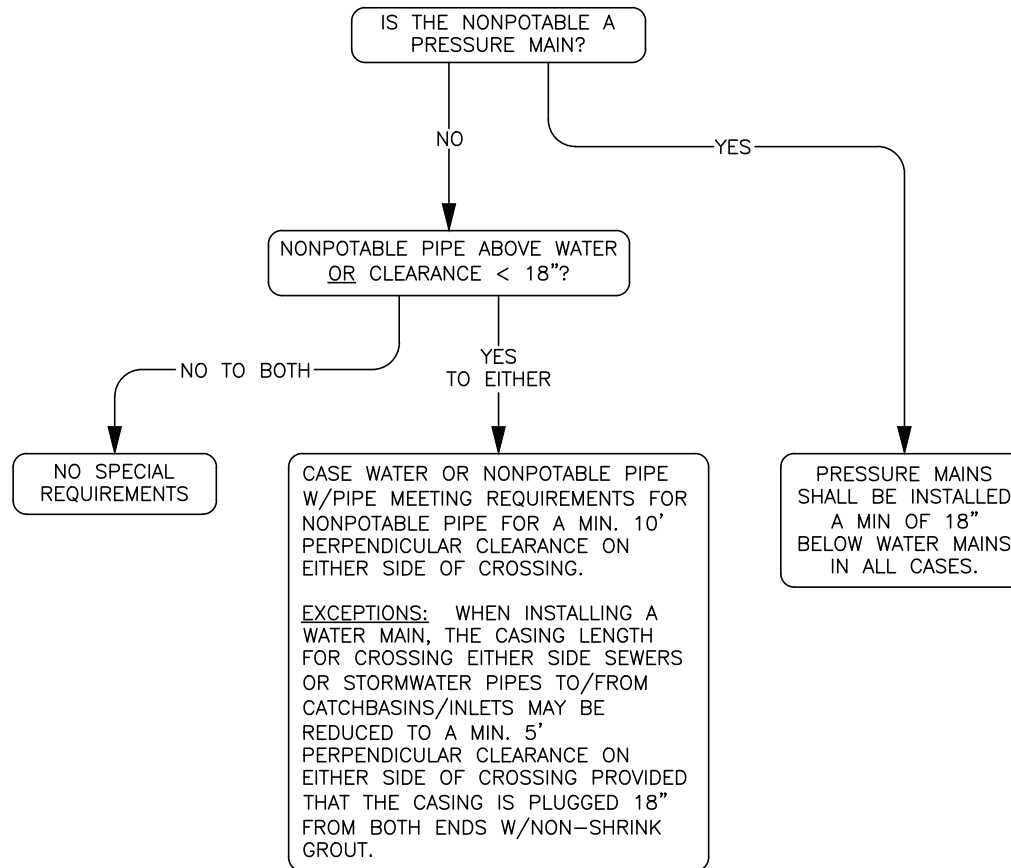




WATER MAIN AND NONPOTABLE PIPE CROSSINGS



NOTES:

1. NONPOTABLE PIPE INCLUDES SANITARY SEWER AND STORM WATER PIPES.
2. SEPARATION OF WATER AND NONPOTABLE PIPE SHALL CONFORM TO THE LATEST EDITION OF THE ECOLOGY/DOH PIPELINE SEPARATION DESIGN AND INSTALLATION REFERENCE GUIDE.
3. CROSSING WATER/NONPOTABLE PIPES OR THEIR CASINGS SHALL HAVE A 6" MIN VERTICAL SEPARATION.
4. FLOW CHART APPLIES TO BOTH EXISTING & NEW SERVICES & MAINS.
5. DISTANCES GIVEN ABOVE ARE MEASURED FROM OUTSIDE OF PIPES OR OTHER CASINGS.
6. DESIGNER/INSTALLER SHALL MAKE ALL REASONABLE ATTEMPTS TO MEET THE FOLLOWING:
  - NONPOTABLE PIPE BENEATH WATER BY AT LEAST 18"
  - CROSSINGS AS CLOSE TO 90° AS POSSIBLE

NO SCALE

	APPROVAL	
		
	PUBLIC WORKS DIRECTOR	
PIPELINE SEPARATION	DATE	01/21/2022
	DRAWING NO.	W-1
	REV:	