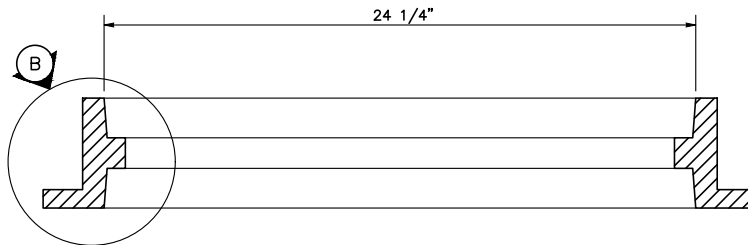
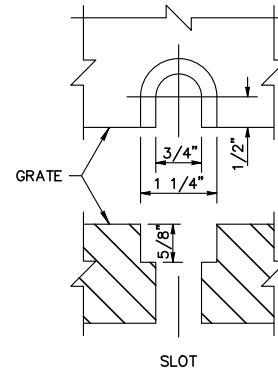


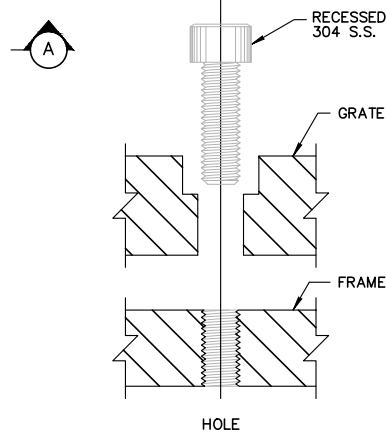
TOP



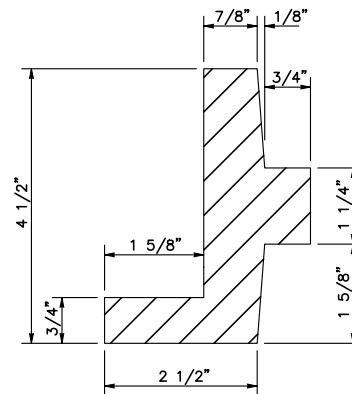
SECTION A



SLOT



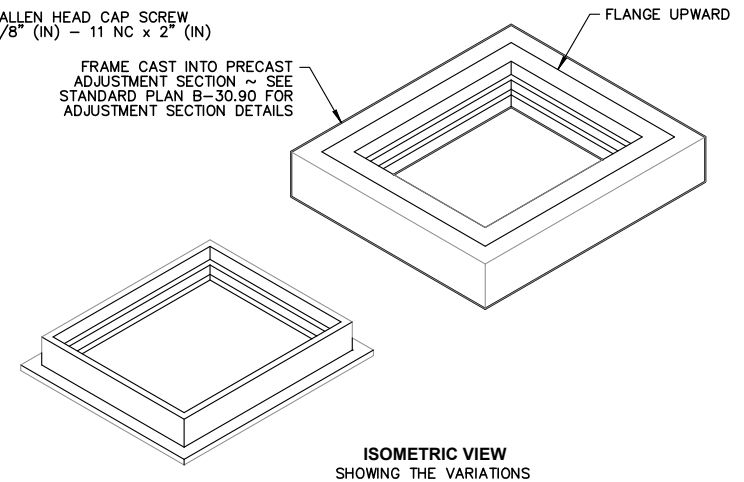
BOLT-DOWN DETAILS
SEE NOTE 2



DETAIL B


NOTES

1. This frame is designed to accommodate 20" (in) x 24" (in) grates or covers.
2. Bolt-down capability is required on all frames, grates, and covers, unless specified otherwise in the Contract. Provide 2 holes in the frame that are vertically aligned with the grate or cover slots. The frame shall accept the 304 Stainless Steel (S.S.) 5/8" (in) - 11 NC x 2" (in) allen head cap screw by being tapped, or other approved mechanism. Location of bolt-down holes varies by manufacturer.
3. Refer to WSDOT Standard Specification Section 9-05.15 and 9-05.15(2) for additional requirements.



ISOMETRIC VIEW
SHOWING THE VARIATIONS

NO SCALE

	<p>APPROVAL</p> <p><i>Wayne R. Naufel</i></p> <p>PUBLIC WORKS DIRECTOR</p>
	<p>DATE</p> <p>01/21/2022</p>
<p>RECTANGULAR FRAME (REVERSIBLE)</p>	<p>DRAWING NO.</p> <p>SW-10</p>
<p>REV:</p>	