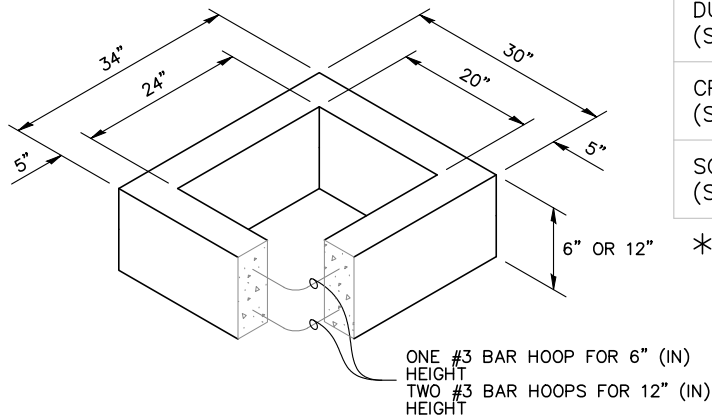
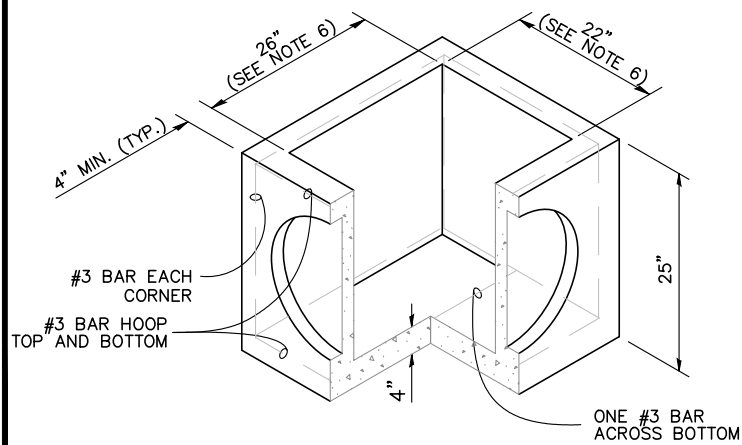


L:\FRHARBOR\15476 Standards\New Standard\Section 6 - Storm Drawings\STORMDET.dwg, 1/18/2022 2:42 PM, BERNIE HAYDEN



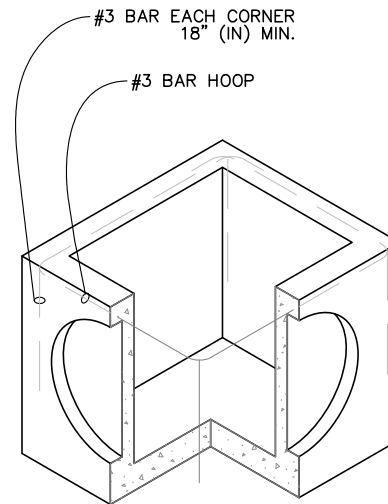
RECTANGULAR ADJUSTMENT SECTION



PRECAST BASE SECTION

PIPE ALLOWANCES	
PIPE MATERIAL	MAXIMUM INSIDE DIAMETER (INCHES)
DUCTILE IRON (STD. SPEC. SECT. 9-05.13)	20"
CPEP * (STD. SPEC. SECT. 9-05.20)	18"
SOLID WALL PVC (STD. SPEC. SECT. 9-05.12(1))	21"

\*CORRUGATED POLYETHYLENE PIPE



(SEE NOTE 2)

ALTERNATIVE PRECAST BASE SECTION

## NOTES

1. ALL PRECAST CONCRETE ITEMS SHALL MEET THE REQUIREMENTS OF AASHTO M199 AND FABRICATED AS SHOWN ON THE STANDARD DRAWINGS.
2. AS ACCEPTABLE ALTERNATIVES TO THE REBAR SHOWN IN THE PRECAST BASE SECTION, FIBERS (PLACED ACCORDING TO THE WSDOT STANDARD SPECIFICATIONS), OR WIRE MESH HAVING A MINIMUM AREA OF 0.12 SQUARE INCHES PER FOOT SHALL BE USED WITH THE MINIMUM REQUIRED REBAR SHOWN IN THE ALTERNATIVE PRECAST BASE SECTION. WIRE MESH SHALL NOT BE PLACED IN THE KNOCKOUTS.
3. THE KNOCKOUT DIAMETER SHALL NOT BE GREATER THAN 18" (IN) . KNOCKOUTS SHALL HAVE A WALL THICKNESS OF 2" (IN) MINIMUM TO 2.5" (IN) MAXIMUM. PROVIDE A 1.5" (IN) MINIMUM GAP BETWEEN THE KNOCKOUT WALL AND THE OUTSIDE OF THE PIPE. AFTER THE PIPE IS INSTALLED, FILL THE GAP WITH JOINT MORTAR IN ACCORDANCE WITH WSDOT STANDARD SPECIFICATION SECTION 9-04.3.
4. THE MAXIMUM DEPTH FROM THE FINISHED GRADE TO THE LOWEST PIPE INVERT SHALL BE 5' (FT).
5. THE FRAME AND GRATE MAY BE INSTALLED WITH THE FLANGE UP OR DOWN. THE FRAME MAY BE CAST INTO THE ADJUSTMENT SECTION.
6. THE PRECAST BASE SECTION MAY HAVE A ROUNDED FLOOR, AND THE WALLS MAY BE SLOPED AT A RATE OF 1 : 24 OR STEEPER.
7. THE OPENING SHALL BE MEASURED AT THE TOP OF THE PRECAST BASE SECTION.
8. ALL PICKUP HOLES SHALL BE GROUTED FULL AFTER THE INLET HAS BEEN PLACED.

NO SCALE



APPROVAL

*Wayne R. Naufel*

PUBLIC WORKS DIRECTOR

CONCRETE INLET

DATE  
01/21/2022

DRAWING NO.  
SW-3

REV: