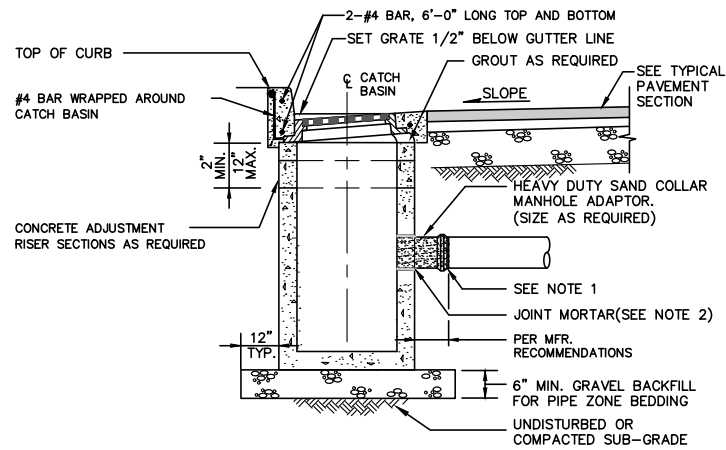
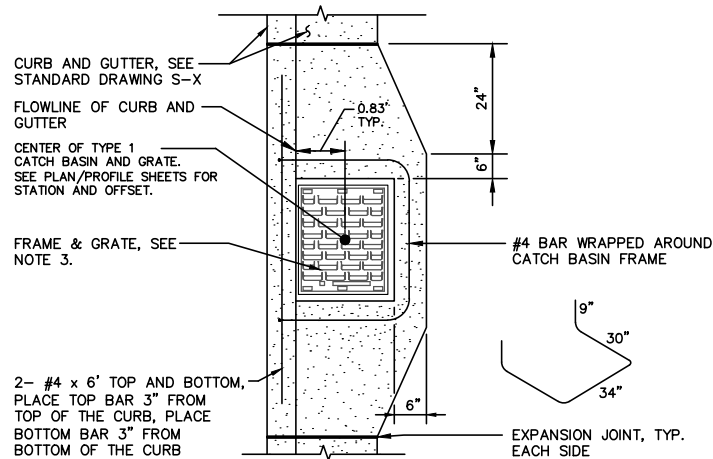


NOTES:

1. IN ORDER TO MAKE A CONNECTION TO EXISTING PIPE, CONTRACTOR SHALL FURNISH AND INSTALL A FLEXIBLE COUPLING/ADAPTER.
2. FILL GAP WITH JOINT MORTAR IN ACCORDANCE WITH WSDOT STANDARD SPECIFICATION SECTION 9-04.3
3. SEE SW-X FOR FRAME, SW-X FOR VANED GRATE, AND SW-X FOR BI-DIRECTIONAL VANED GRATE. FOR GRATES LOCATED IN A LOW SPOT, PROVIDE A BI-DIRECTIONAL VANED GRATE.



**ELEVATION**



**PLAN**

NO SCALE



APPROVAL

*Wayne R. Haufelt*

PUBLIC WORKS DIRECTOR

**CATCH BASIN TYPE 1 & 1L  
& CONCRETE INLET  
INSTALLATION DETAIL**

DATE  
**01/21/2022**

DRAWING NO.

**SW-1**

REV: