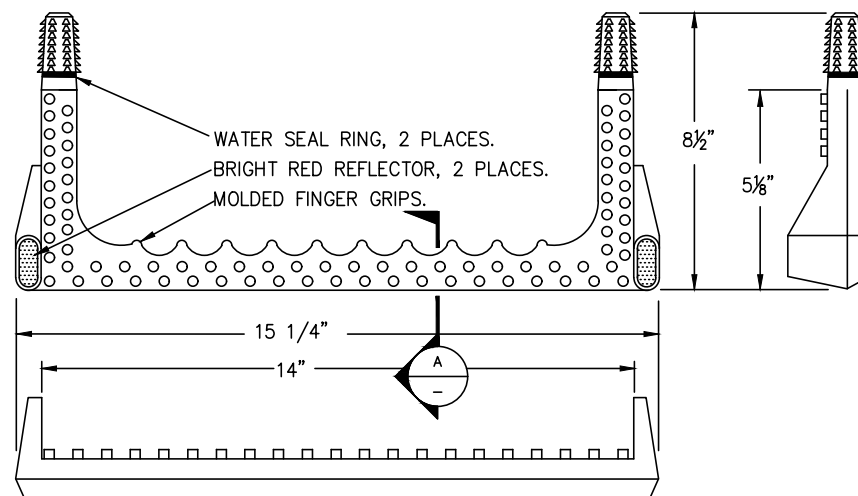
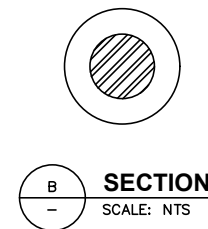
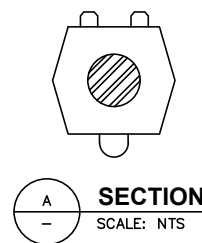


HANGING LADDER



STEP



NOTES:

1. STEPS TO BE LANE #P-14850 OR TOWN APPROVED EQUAL.
2. FASTEN LADDER TO MH STRUCTURE WITH STAINLESS STEEL LAG SCREWS INTO LEAD ANCHORS, OR SET LADDER BASE INTO MH SHELF PRIOR TO CURING.

NO SCALE

	<p>APPROVAL</p> <p><i>Wayne R. Hausle</i></p> <p>PUBLIC WORKS DIRECTOR</p>
	<p>DATE</p> <p>01/21/2022</p>
<p>MANHOLE STEPS AND LADDER</p>	
<p>DRAWING NO.</p> <p>S-4</p>	
<p>REV:</p>	