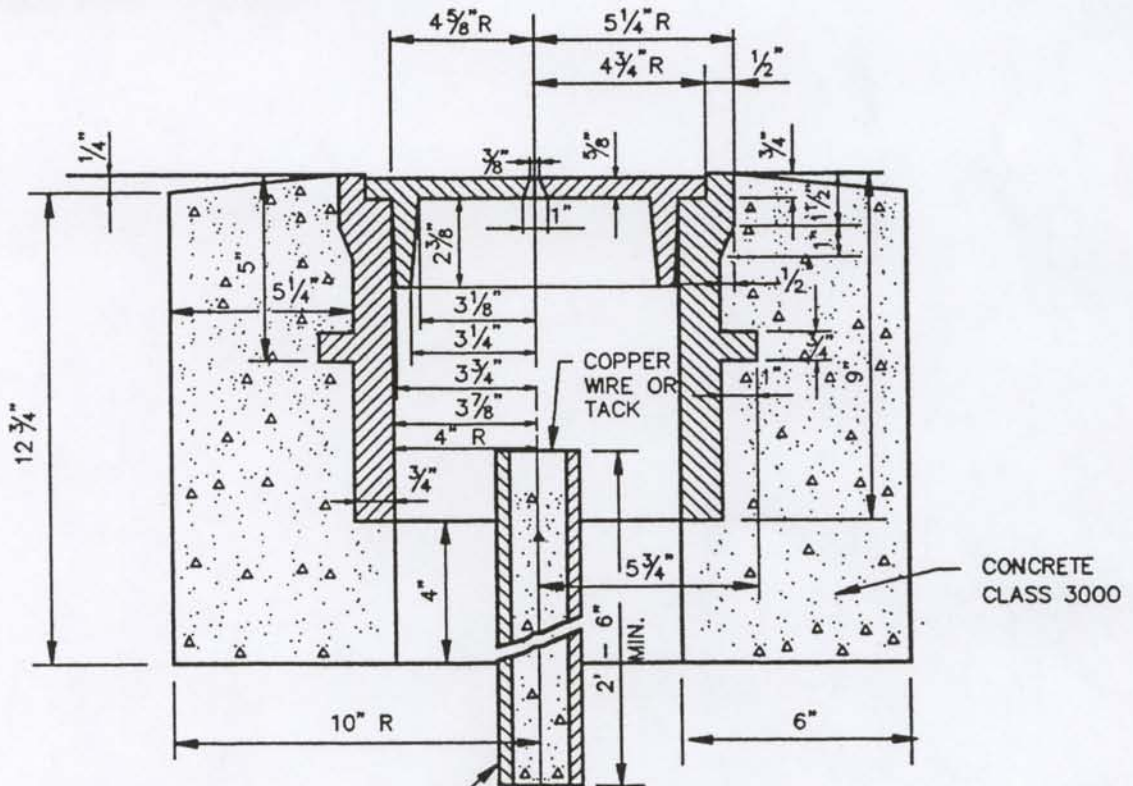


MONUMENT COVER

NOTES:

1. MACHINE BEARING FACES OF COVER AND CASE TO INSURE POSITIVE FIT.
2. MONUMENT CASE AND COVER PER WSDOT STANDARD PLAN H-7.
3. WHEN THE MONUMENT CASE AND COVER ARE PLACED IN CEMENT CONCRETE PAVEMENT, THE CONCRETE BASE WILL NOT BE NECESSARY.



MONUMENT 2" GALV. IRON PIPE WITH
CONCRETE CORE FOR GENERAL USE

PRECAST MONUMENT CASE AND COVER

TOWN OF FRIDAY HARBOR			
PRECAST MONUMENT CASE AND COVER			
APPROVED: <i>C. King</i> TOWN ADMINISTRATOR			DWG. NO. 4-21
DATE: 1/16/97			DATE: 1/16/97
DRWN: E.S.T.		CHKD: T.A.N.	
SCALE: NO SCALE			